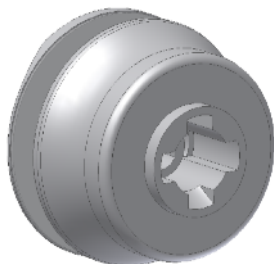
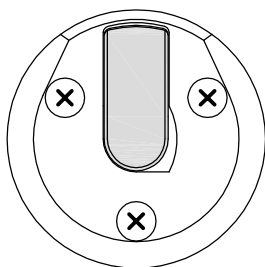
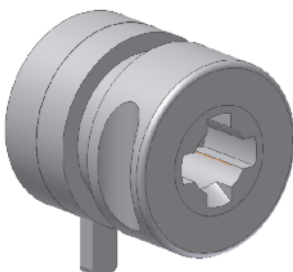
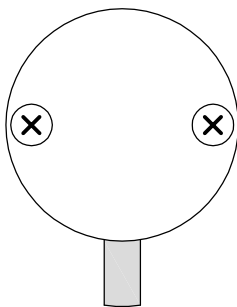
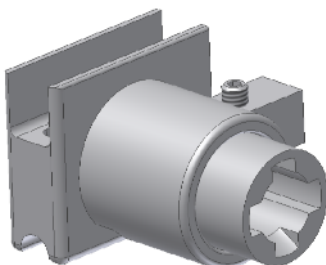
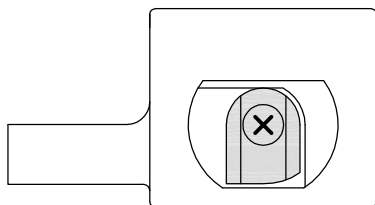


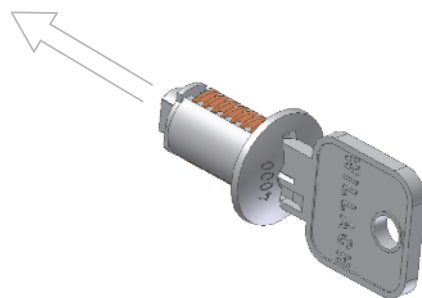
Glastür - Grifflöfser sind kompatibel mit Dreh,-Druckzylinderschlöfsern aus der "exklusivserie"

Montage oder Demontage von Innenzylinder Assembly or disassembly of the cylinder core

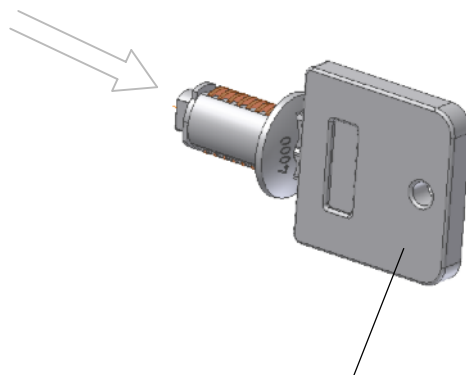
Lage der Schließhebel - Montage / Demontage
Position of the locking bolt - assembly / disassembly



Montage Innenzylinder
Assembly of the cylinder core



Demontage Innenzylinder
Disassembly of the cylinder core



Art.-Nr. 606 640
Art.-No.